

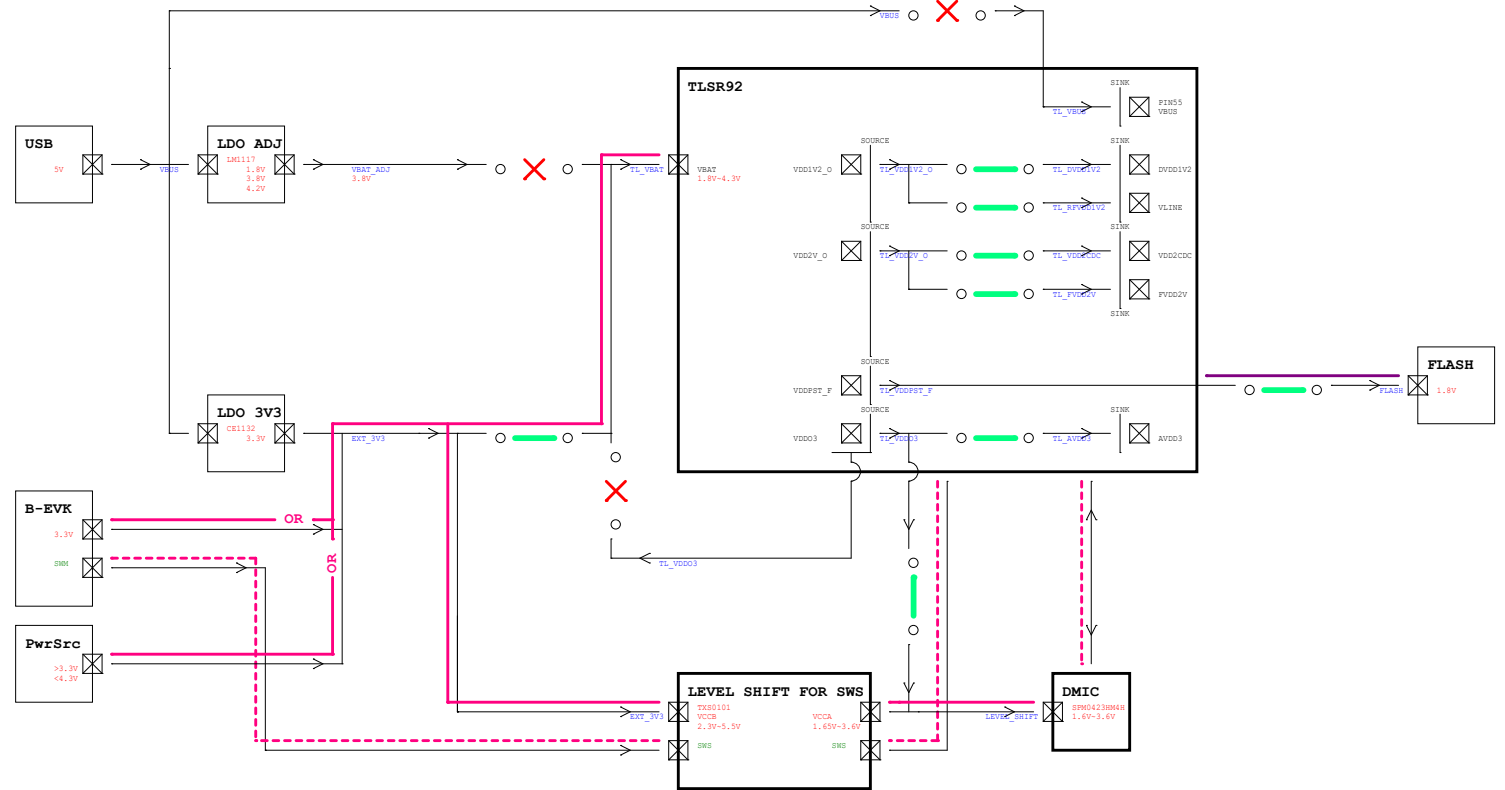
REV1.0

REV1.1

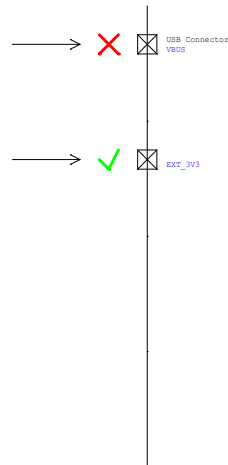
Date	Note	Approved by	Reivew
2023/05/10	Initial Version	JIA QING	Jianbo
2023/08/11	1.TLSR9527C QFN56C - > QFN56E 2.Delete PD0 and control LED_W,LED_R,LED_G,LED_B by PE6,PE7,PF0,PF1 3.Repair J21,J5,J16,J17 pin assignments 4.Remove keys SW6,SW7 and control KEY4,KEY3,KEY2,KEY1 by PE2,PE3,PE4,PE5 5.Modify the supply voltage of U3 and U5 from EXT_3V3 to LEVEL_SHIFT 6.Modify J11 D+,D-pin inputs by TL_PA5_DM -> DM,TL_PA6_DP -> DP 7.Modify U8's VCCA pin from TL_VDDO3 -> LEVEL_SHIFT 8.Modify the VCCB pin of U8 from BEVK_3V3 -> EXT_3V3 9.Modify BEVK_3V3 -> EXT_3V3 of J15	HAIKUAN	Jianbo Xiang

### 3.3V power domain SCENARIO-01

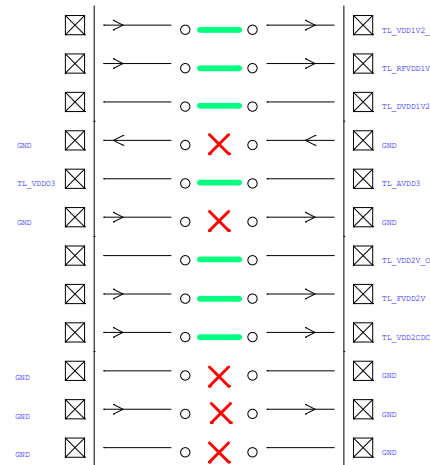
- No USB plug-in.
- Chip works under 3.3V power domain.
- External power is connected to net of EXT\_3V3.
  - External power range is from 3.3V to 4.3V.
  - VCCB of level shift must be higher than VCCA of level shift.
  - When uart or SWM is connected for communication, power supply must be set to 3.3V, since power domain of burning board is 3.3V.
- Chip's power is from VBAT.



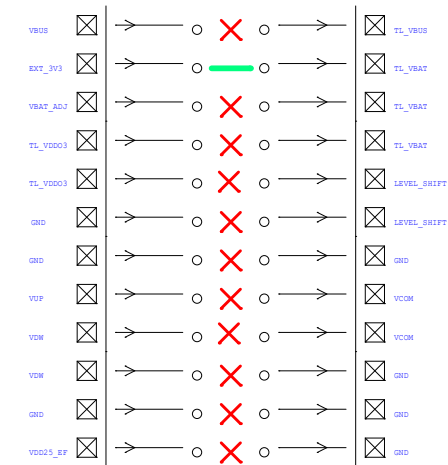
**J15 AND U11  
TOP VIEW**

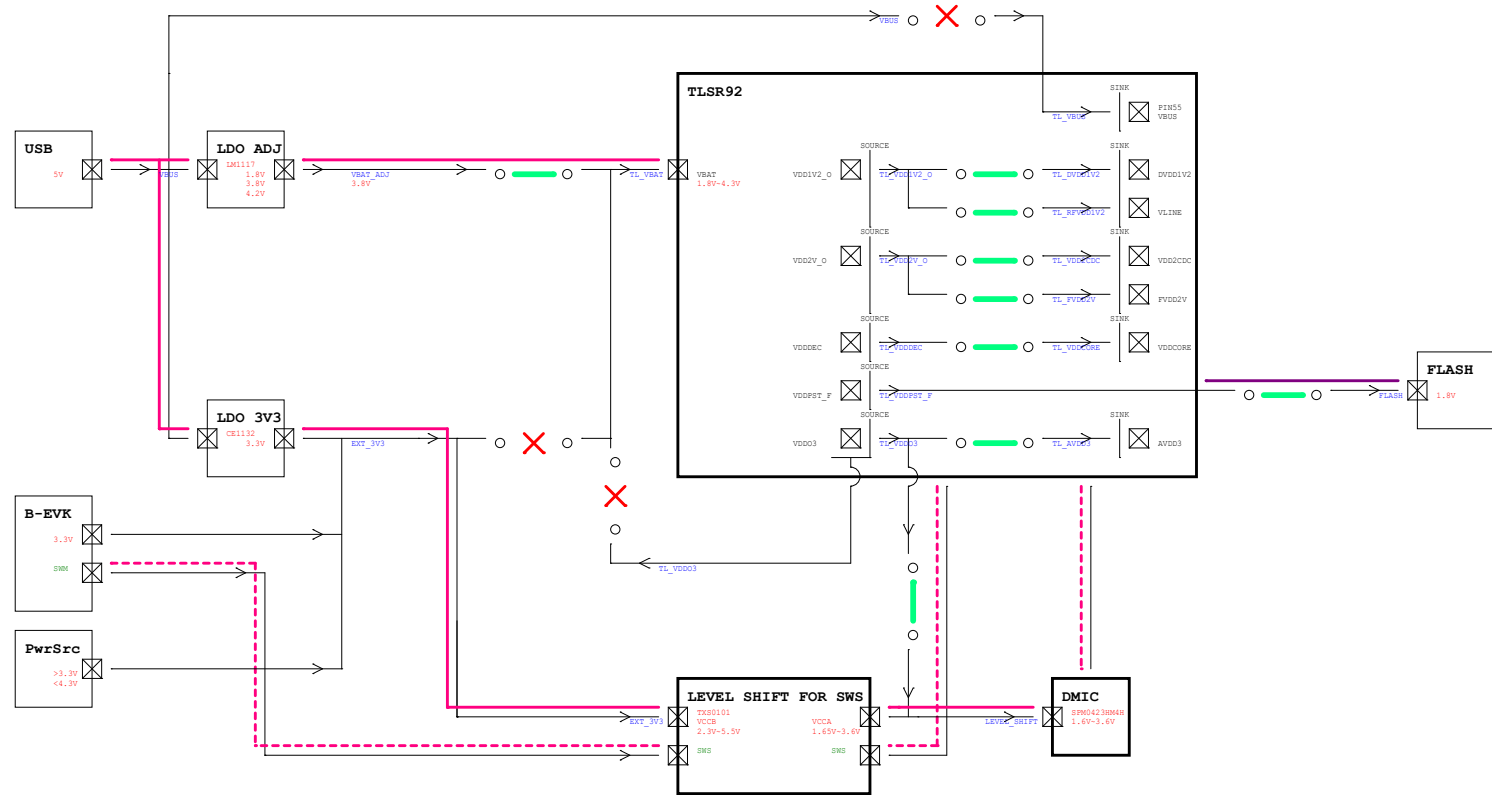


**J16  
BOTTOM LEFT  
TOP VIEW**



**J17  
BOTTOM RIGHT  
TOP VIEW**

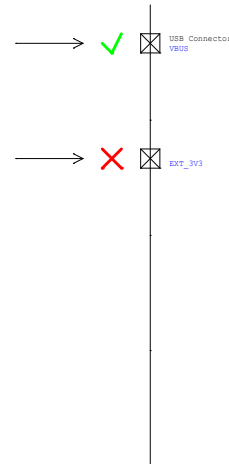




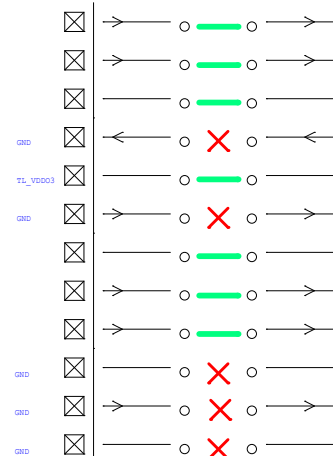
### 3.3V power domain SCENARIO-02

1. USB plug-in, 5V is from USB connector.
2. Chip works under 3.3V power domain.
3. Chip's power is from VBAT.
  - 2.1 Chip's power is 1.8V, 3.3V, 3.8V, or 4.2V.

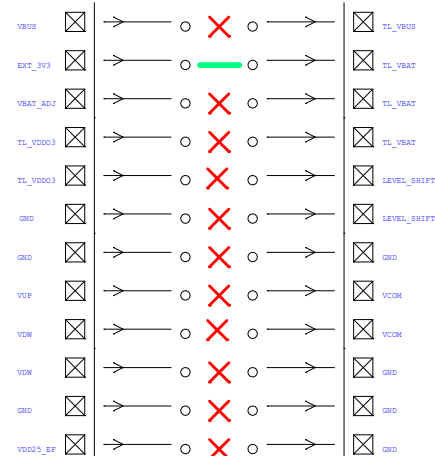
**J15 AND U11  
TOP VIEW**



**J16  
BOTTOM LEFT  
TOP VIEW**



**J17  
BOTTOM RIGHT  
TOP VIEW**







Title		
TELINK		
Size	Document Number	Rev
A4	C1T306A20	V1.1
Date:	Monday, August 07, 2023	Sheet 2 of 5

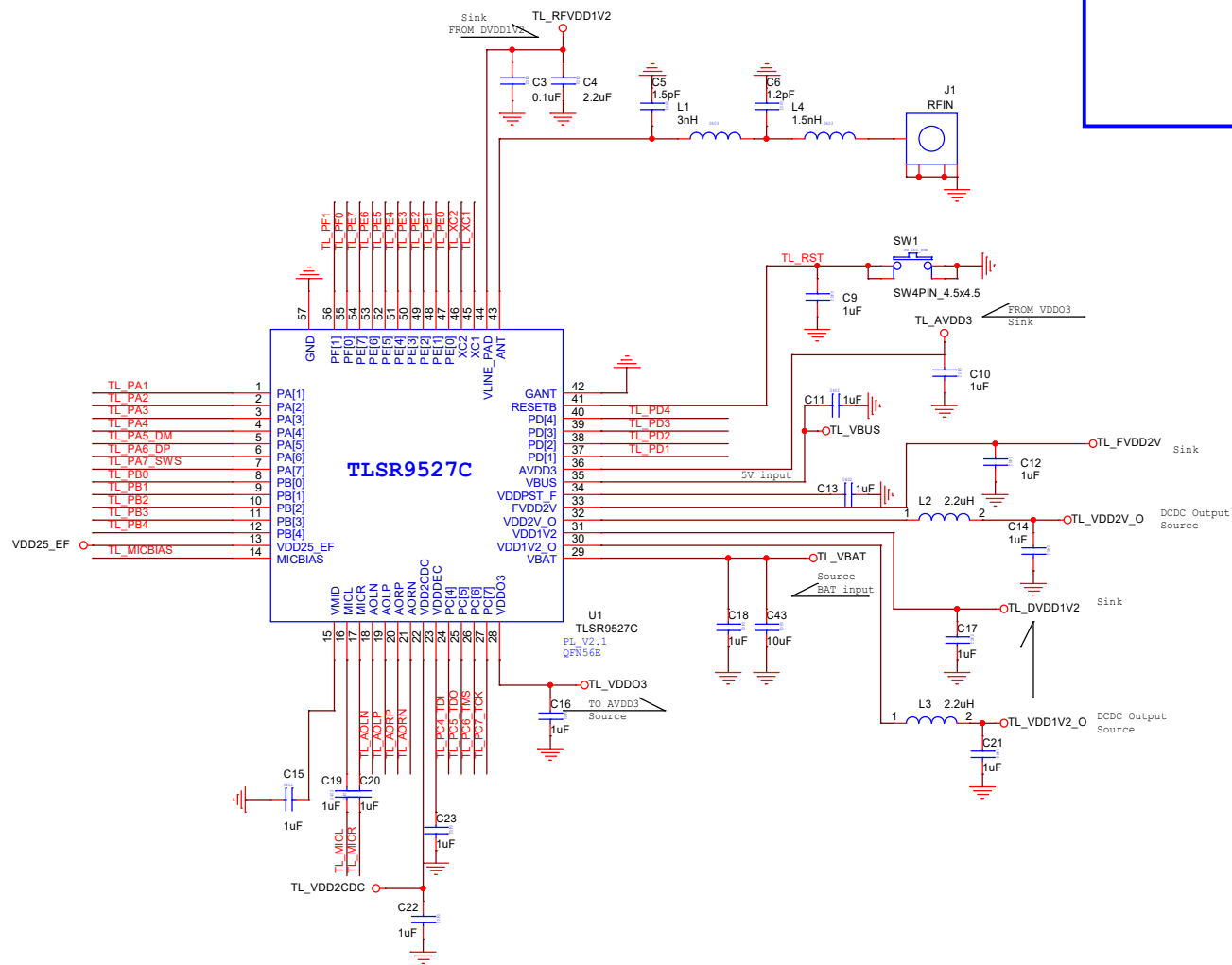
<<TL\_PA1  
<<TL\_PA2  
<<TL\_PA3  
<<TL\_PA4  
<<TL\_PA5\_DM  
<<TL\_PA6\_DP  
<<TL\_PA7\_SWS  
<<TL\_PB0  
<<TL\_PB1  
<<TL\_PB2  
<<TL\_PB3  
<<TL\_PB4

<<TL\_MICBIAS  
<<TL\_MICL  
<<TL\_MICR  
<<TL\_AOLN  
<<TL\_AOLP  
<<TL\_AORP  
<<TL\_AORN

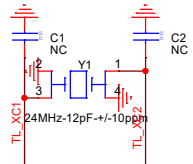
<<TL\_PC4\_TDI  
<<TL\_PC5\_TDO  
<<TL\_PC6\_TMS  
<<TL\_PC7\_TCK

<<TL\_PD1  
<<TL\_PD2  
<<TL\_PD3  
<<TL\_PD4

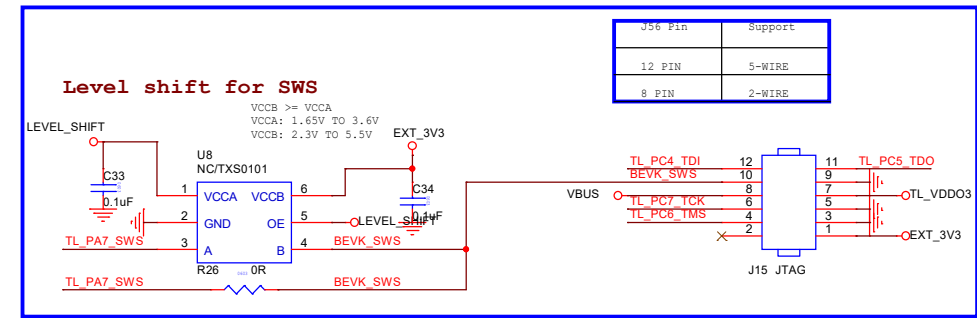
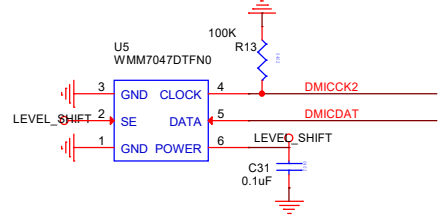
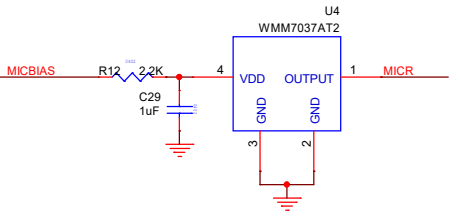
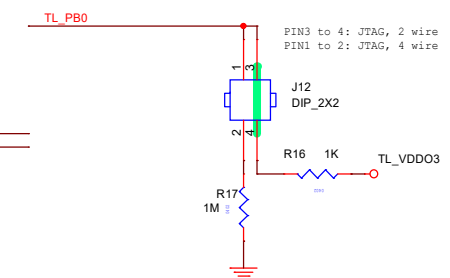
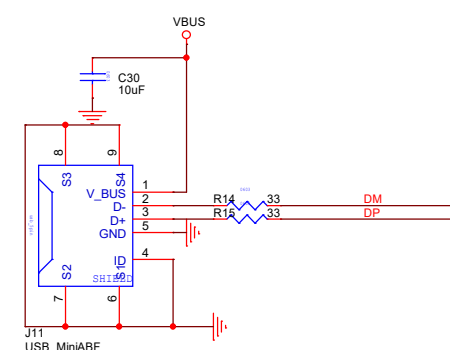
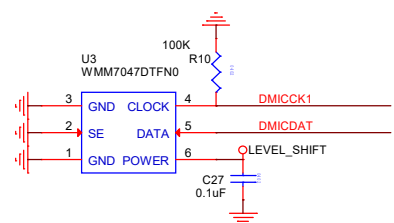
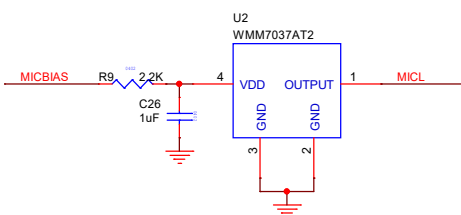
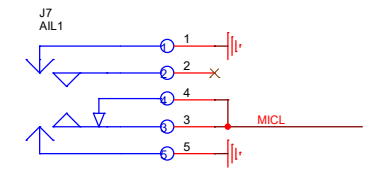
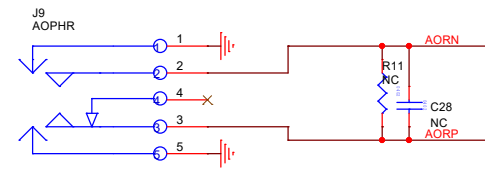
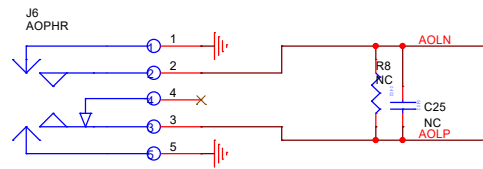
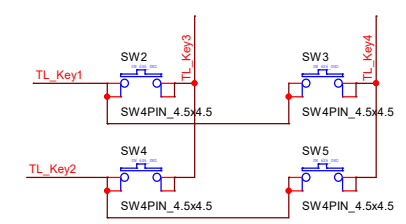
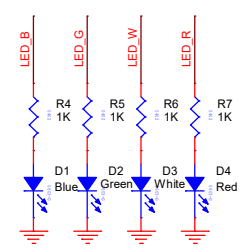
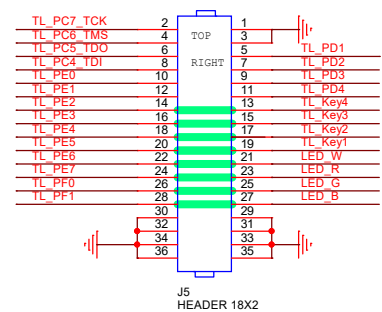
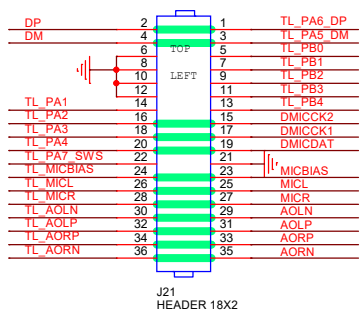
<<TL\_PE0  
<<TL\_PE1  
<<TL\_PE2  
<<TL\_PE3  
<<TL\_PE4  
<<TL\_PE5  
<<TL\_PE6  
<<TL\_PE7  
<<TL\_PFO  
<<TL\_PFI



Crystal



Title			TELINK
Size	A3	Document Number	C1T306A20
Date:	Monday, December 04, 2023	Sheet	3 of 5
Rev	V1.1		



Title		TELINK
Size	A3	Document Number C1T306A20
Date:	Friday, November 17, 2023	Sheet 4 of 5
Rev	V1.1	

