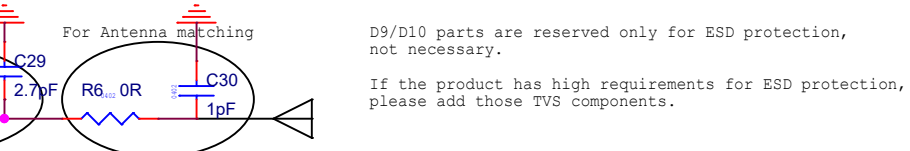
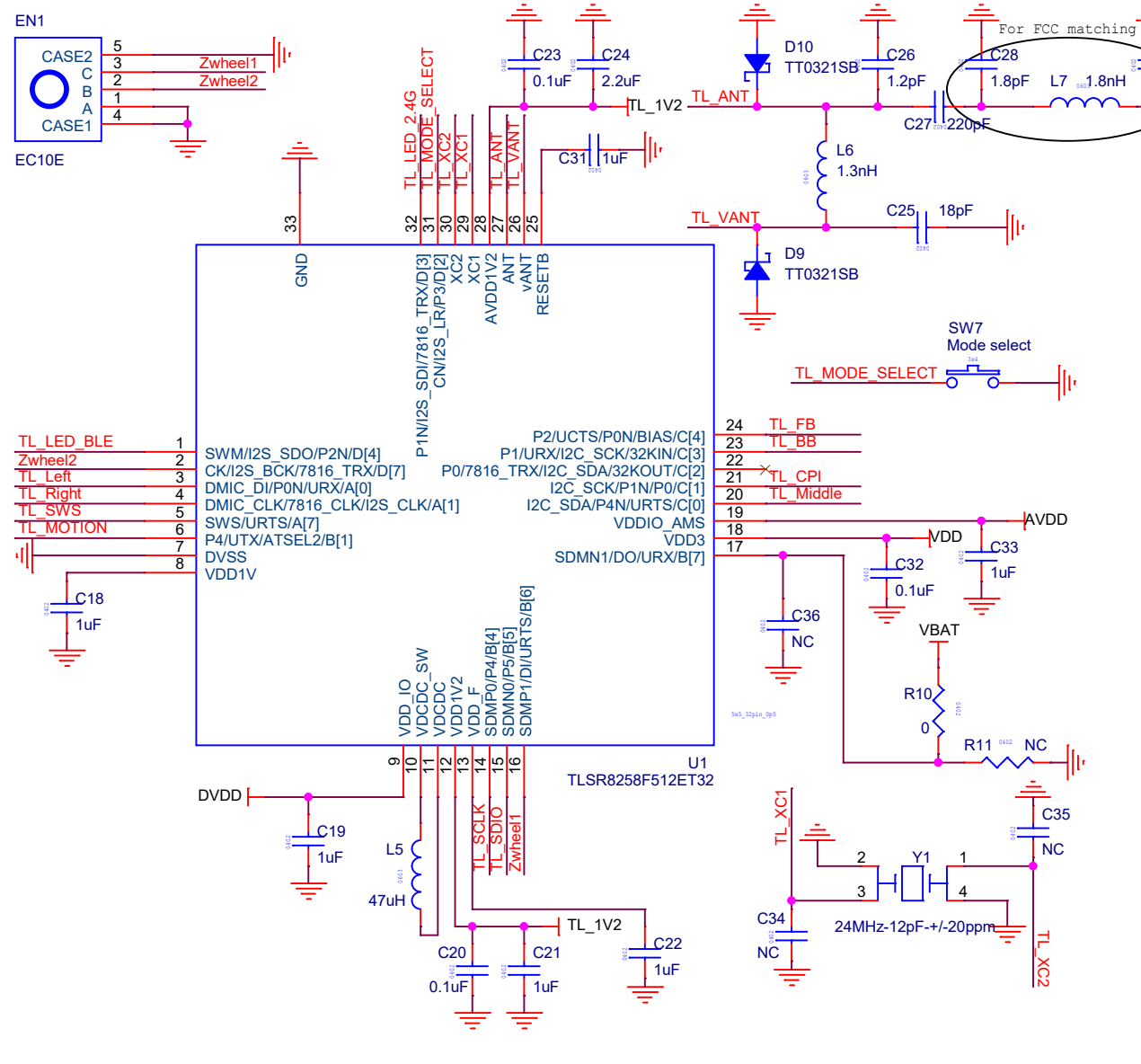
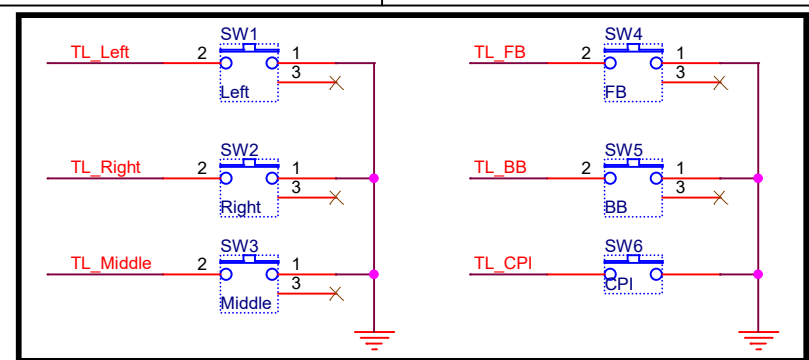
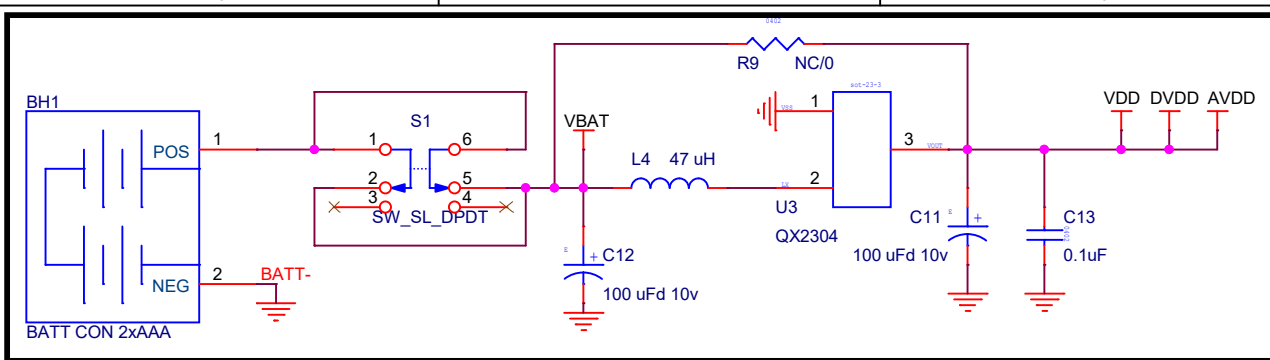


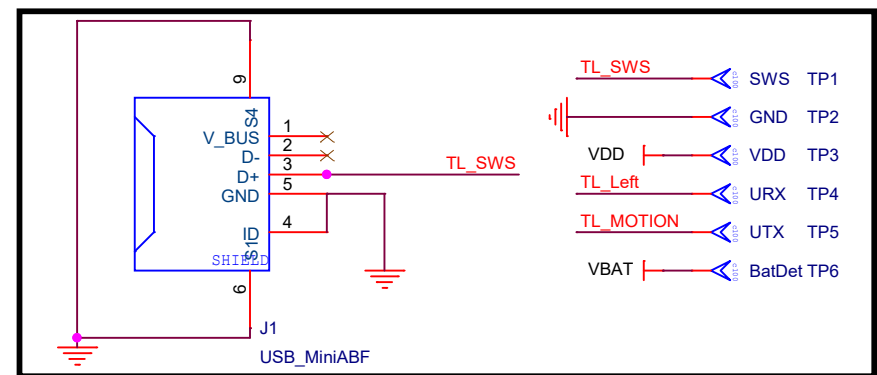
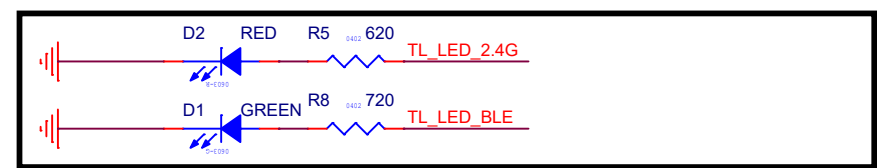
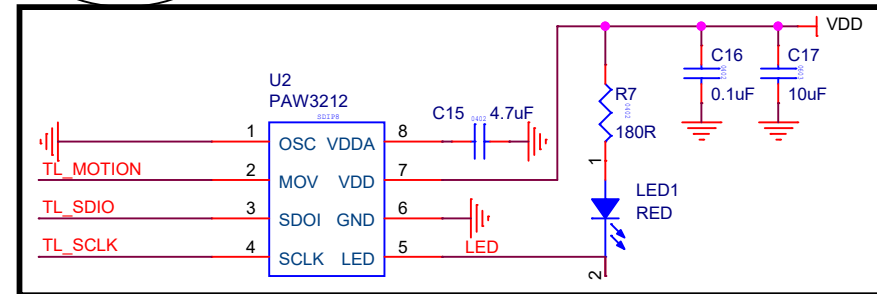
Date	Version	Update
2018-11-13	V1.0	update C26/C28/C29/C30/L7/L8 value;
2018-12-19	V1.0	update C26/C28/C30/L7/L8 value;
2019-04-11	V1.1	Optimization design of PCB and schematic diagram stays the same.
2019-06-18	V1.2	Optimization design of PCB and update C28/L7/C29 value
2021-07-13	V1.2	Add TVS diode TT0321SB to the RF pin, PCB is not updated

Title Telink-Semi		
Size A	Document Number C1T140A6	Rev V1.1
Date:	Tuesday, July 13, 2021	Sheet 1 of 2



D9/D10 parts are reserved only for ESD protection, not necessary.

If the product has high requirements for ESD protection, please add those TVS components.



Title		
Telink-Semi		
Size	Document Number	Rev
A4	C1T140A6	V1.1
Date:	Tuesday, August 24, 2021	Sheet 2 of 2